



PROFESSIONAL NETWORK VIDEO SERVER

As a powerful and flexible DVR, the DV-IP Server fulfils the majority of networked surveillance requirements. It's extensive set of leading edge technologies, and simple to install features means it is ideal for sites that require remote monitoring.

The DV-IP Server offers the installer a simple set-up process. On initial start-up, the immediate notification of the unit's IP address is displayed on screen via a connected composite monitor. This eliminates the need to connect a laptop to set or find the DHCP IP address.

Alarm reporting, FTP archiving, JPEG/MPEG-4 transcoded video transmission and **MultiMode** Recording can all be accessed and configured through the network.

The balance of a simple installation and comprehensive remote monitoring features is provided by the DV-IP Server without compromise. As part of the 'NetVu Connected' family the new DV-IP Server is built to adapt to future advances in security technology, protecting your investment for years to come.

FEATURES

- ▶ **IP address notification through a connected spot monitor simplifies the installation process**
- ▶ **Simultaneous MPEG-4 & JPEG transmission and recording**
- ▶ **Designed for central monitoring applications (BS-8418 compliance^{Note 1})**
- ▶ **MultiMode Recording - Dynamically-switchable resolution, record-rate & compression (MPEG4/JPEG) per camera**
- ▶ **Simultaneous record, playback, live viewing, archiving and multiple user network viewing with no loss of recording performance**
- ▶ **Automatic connection to remote video receiving centre on alarm**
- ▶ **Pre-alarm recording to capture evidence before alarms are triggered**
- ▶ **Instant Remote Alarm monitoring using Ethernet, PPP modem link, Email and SMS**
- ▶ **False alarm suppression and alternative signalling path**
- ▶ **Immediate access to any time/date via instant GOTO capability**
- ▶ **Video motion search allows search back through recordings for movement in a specific area of the image**
- ▶ **Web based configuration allows remote system adjustments negating the need for site visits**
- ▶ **Free NetVu ObserVer remote viewing software**
- ▶ **SDK available for project customisation**
- ▶ **Multiway DuoVu for live and recorded viewing simultaneously**



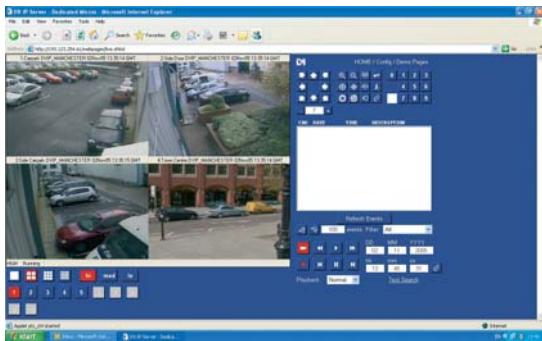
The DV-IP Server comprises 6, 10 or 16 camera inputs, with choices of record rates from 50PPS to 100PPS (PAL).

RECORDING

Simultaneous recording and playback from any camera continues uninterrupted whilst other images are being viewed live. The DV-IP Server also allows for the resolution of viewed images to be dynamically altered maximising live viewing performance over the available bandwidth.

NETWORK CONTROL

Control of DV-IP Server is achieved over Ethernet either by NetVu ObserVer or via a standard web browser. Pre-loaded web pages allow for setup, configuration, image archiving, live viewing, telemetry and playback.



Control of the DV-IP Server using a standard web browser

DV-IP Server is compatible with DHCP for automatic IP address assignment, the unit also supports manual IP settings. Video Bandwidth Restriction ensures image transmission only uses allocated bandwidth.

MultiMode RECORDING

MultiMode recording gives you the ability to set different record rates, resolutions and compression algorithms across scheduled, normal and alarm modes. Up to 24 MultiMode Recording profiles can be set per unit, giving you the flexibility to adjust resolution (QCIF to 4CIF), record rates and compression settings (MPEG-4/JPEG) dynamically on individual cameras and across the whole unit.

MULTIWAY DuoVu

DV-IP Server has traditionally provided playback in full screen, picture in picture and quad display modes. Now you can choose to playback in any multiway display mode, right up to 16-way. For ultimate flexibility you can now have any combination of live and recorded segments on the multiway view, allowing you to review recorded material, while keeping an eye to ongoing surveillance.

TEXT SUPPORT

Through the inclusion of (RS) Text features, the DV-IP Server can search captured transaction data e.g. for specific goods purchased, transaction numbers, credit card references, keywords and jump straight to the associated video sequence. Additional functionality allows alarms to be raised on the use of keywords from POS and other devices. Search and playback is also supported through NetVu ObserVer.

INSTANT ALARM REPORTING

The system can dial-out on alarm to a remote site to provide instant alarm notification.

- Instant alarm reporting
- Dial-out on alarm
- Alternative signalling path

NETVU CONNECTED

DV-IP Server has NetVu technology built-in to ensure maximum compatibility with future developments in networked security. NetVu technology enables the DV-IP Server to fully interoperate with other NetVu compatible products from DM including the DV-IP Decoder, NetVu Console, NetVu ObserVer and PDA Viewers. NetVu uses industry standard networking protocols

supported by the NetVu SDK and a wide range of third-party integration products to ensure on-going compatibility.

RECORD RATE

The DV-IP Server can record real time on 2 cameras at 50PPS (PAL), 60PPS (NTSC) and 4 cameras at 100PPS (PAL), 120PPS (NTSC).

MPEG-4 LIVE VIEWING AND PLAYBACK

This technology ensures that users of bandwidth limited networks have increased opportunity to view video in real-time. Features are provided to ensure the user can configure the DV-IP Server's image resolution, bit rate, and also how many pictures per second to transmit. All images are recorded locally in JPEG format to ensure that recording continues in the event of a network failure.

VIDEO MOTION DETECTION

- 80x64 pixel VMD detection resolution
- Programmable VMD grid with 16 individually definable zones per camera
- User-definable sensitivity for each zone
- Pre and post activity recording, definable by user
- Change camera recording rates on activity
- Notify user of activity over Ethernet, ISDN and PSTN
- Stores all VMD instances in Events database
- Global VMD relay
- Linkable to alarm zone

VIDEO MOTION SEARCH FACILITY

Allows the user to search through hard-disk recordings for movement in a particular area of the image, set up on a 16x16 (PAL) cell grid (16x14 NTSC). The unit is then able to search back through the hard drive and create a list of activities for the user to view and archive as required.

FLASH DISK OPERATION

To ensure that surveillance and alarm reporting functions are unaffected in the unlikely event of HDD failure, the DV-IP Server has a built-in Flash Disk containing all the essential program and configuration data.

SCHEDULING

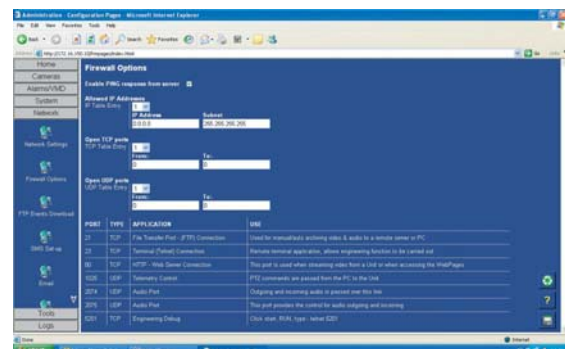
Choice of day, night or weekend scheduling offers the ability to automatically:

- Select the cameras to be recorded
- Switch alarms and activity on/off
- Alter the record rate for standard, alarm and activity recording

Activation is via timer or alarm panel link to Alarm input

SECURITY

DV-IP Server features a built-in firewall for network intrusion detection and protection. Network PING responses can be disabled, meaning it is no longer possible to discover the DV-IP Servers IP address using automated subnet scanning software. This coupled with the Trusted IP addresses list and the ability to open/close specific TCP and UDP ports ensures the DV-IP Server is configurable for use on any network large or small.



The DV-IP Server firewall configuration

WEB BASED CONFIGURATION

Web based configuration enables system adjustments to be made remotely to a networked unit, such as change the record rate, setup the advanced VMD grids, program presets and more – without the need for a site visit.

VIDEO MOTION SEARCH FACILITY

Allows the user to search through hard-disk recordings for movement in a particular area of the image, set up on a 16x16 (PAL) cell grid (16x14 NTSC). The unit is then able to search back through the hard drive and create a list of activities for the user to view and archive as required.

TIMED EXPIRY

Timed expiry option allows images to be held for a selected number of days. Images on the disk which are older than the number of days selected are not accessible

CAMERAS

- 6,10, or 16 inputs
- 1V Pk-Pk Video Input (looping)
- PAL, NTSC
- Colour, Mono mix
- 75Ω Camera Termination provided in software

MONITOR VIEWING

Spot monitor: (Composite)

Full screen, programmable sequence & alarm switching.

- IP address notification on boot up
- Select the cameras to be recorded
- Switch alarms and activity on/off
- Alter the record rate for standard, alarm and activity recording
- Activation is via timer or alarm panel link to Alarm input

AUDIO ^{Note2} (MONO)

- 2 x Audio Inputs / Outputs - Phono
- Full bi-directional audio with recording on each input software selectable
- 47KΩ input / output impedance

RELAYS

- 6 onboard light duty relay output (500mA @ 12V-48V Max)
- Default settings:
- Relay1 – Global alarm/user definable
 - Relay2 – Global VMD/ user definable
 - Relay3 – Global camera fail/user definable
 - Relay4 – Set/Unset notification (BS8418 support ^{Note1})
 - Relay5 – Primary signalling failure (BS8418 support ^{Note1})
 - Relay6 – User definable

PRE-ALARM

Each camera input can continuously capture a configurable number of images at a user defined pre-alarm capture rate. When an event occurs, the images captured before the alarm event are recorded to disk, allowing the viewer to see enhanced evidence leading up to the event.

FALSE ALARM SUPPRESSION

Advanced alarm zones added to DV-IP Server allow you to combine multiple detection sources to minimise false triggers. E.g. you can set an alarm to be triggered by a combination of a PIR and Camera VMD to remove miss-triggers from either source. Added to this, each alarm input can be temporarily disabled by a remote administrator to ensure that faulty detectors do not mask real alarm incidents.

ALARM CONTACTS

- 18 x Alarm Inputs Total
- 1 x Aux Input (NO/NC only)
- 17 x General Alarm Inputs (tamper ^{Note1} or NO/NC selectable)
- Normally Open/Normally Closed software selectable
- Tamper selectable ^{Note1}

ALARM SUPPORT (BS8418 ^{Note1})

- Tamper (Resistance)
- 0 - 900Ω - Tamper (Short circuit)
- 900 - 1.2kΩ - Normal (Closed)
- 1.2 - 12kΩ - Alarm (Open)
- 12kΩ - Infinity Tamper (Open circuit)
- Voltage Free
- Closed contact operation
- VMD Trigger
- Camera Fail Trigger

ADVANCED ALARM SUPPORT (BS-8418 ^{Note1})

- Tamper proof alarm inputs
- Nuisance detector management
- Application watch dog
- Comprehensive system logs
- Secondary signalling support via relay contact
- Modem port for secondary signalling
- Relay system set/unset notification
- Entry/Exit routes for alarm inputs

COMPRESSION

- Standard JPEG format files with user definable compressed image size for high quality recording.
- Simultaneous MPEG-4 network streams for low bandwidth remote viewing or background recording.

NETWORK CAPABILITIES

A standard Ethernet connection allows live and recorded viewing on a networked PC using DM's NetVu ObserVer software or via web pages using a standard Internet browser.

Network viewing is independent and does not affect the recording or local operation.

The DV-IP Server includes a network bandwidth limitation option, which allows the bandwidth used by the DVIP Server to be capped. For low bandwidth remote network links, viewing applications can request that video is sent in MPEG-4 format, while local network viewers can simultaneously view using high quality JPEG images.

NetVu ObserVer software and Web page features include:

- Live full, quad, 6, 9, 16, 25 and 36 way screens
- GOTO time and date
- File export of digitally signed images over the network to the user's PC using NetVu software
- Remote manual control of relay output on the unit
- Telemetry control, including PTZ and telemetry presets
- Multiple user access
- Event log
- Network viewing is also available for Mac OSX and Linux
- ARC features supported (such as event manager and incident characterisation).

See the latest NetVu ObserVer datasheet for more information.

NETWORK SUPPORT

- RJ45 Connector
- 10/100 BaseT Auto Negotiation (or forced 10BaseT)
- Network Protocols Supported; IP, TCP, UDP, DHCP, FTP, TELNET, ICMP, HTTP, ARP ,
- Configurable port numbers for HTTP
- Built-in firewall for network intrusion detection and protection

SERIAL PORTS

- 4 x Serial Ports – comprising:
 - 2 x Full RS232 (9 wires)
 - 2 x RS232 (3 wires) RS485, RS422 (Telem ports)
- Dip switch selectable termination for DM485 Bus, Com 3 and Com 4

SERIAL PORT OPERATIONAL MODES

- PPP, Telemetry, Matrix Control, Debug, Text In Image

SPECIFICATION

IMAGE PROTECTION/UNPROTECTION

- All images tagged as an alarm will be automatically protected
- Non alarmed video footage may be user selected using time/date, from/to for image protection
- Images may be manually protected/unprotected

DIGITAL SIGNATURE

- Automatic Finger Printing on FTP download and on demand via software GUI

TELEMETRY

Coax

- BBV
- BBV RX100 (protocol converter for control of major manufacturer's domes)
- Pelco Spectra II & III (Please note that patrol modes are not available)

Serial

- Dedicated Micros 2040, 2060
- JVC TK-C675BE, TK-C676 & TK-C553E
- Ultak Ultradome™ KD6
- Ademco Orbiter & Jupiter Microspheres™
- GE CyberDome™
- BBV RE485 StarCard
- Bosch/Philips G3
- Ernitec
- Mark Mercer
- Panasonic WV-CS850A, WV-CS854, WV-CW860 external
- Sensomatic SpeedDome™ IV & SpeedDome™ V (with 4-wire RS-422 support)
- Pelco P Spectra II, Spectra III
- Samsung SCC-641
- Vista Power Dome

SUPPORT APPLICATIONS

- NetVu ObserVer

| DV-IP SERVER RANGE | |
|----------------------------|----------|
| DV-IP SERVER 6 WAY 50PPS | DV-IP6 |
| DV-IP SERVER 10 WAY 50PPS | DV-IP10 |
| DV-IP SERVER 16 WAY 50PPS | DV-IP16 |
| DV-IP SERVER 6 WAY 100PPS | DV-IP6D |
| DV-IP SERVER 10 WAY 100PPS | DV-IP10D |
| DV-IP SERVER 16 WAY 100PPS | DV-IP16D |

PLEASE CHECK THE WEBSITE FOR DETAILS OF COMPATIBLE PRODUCTS AND OTHER LATEST DEVELOPMENTS

BROWSER SUPPORT

- IE 5.5 and above
- Netscape 4.7 and above
- Firefox 1.5 and above

DEVELOPERS SUPPORT

- Java (Via the DM Software Developers Kit)

COLOUR RESOLUTION

Sampling rate: 13.5 MHz to CCIR 601
 Number of pixels: PAL 720h x 512v
 NTSC 720h x 448v
 16.8 million colours 256 levels of grey, 8-bit luma.

LANGUAGES

English, French, German, Spanish, Italian, Russian, Czech, Polish, Dutch, Hungarian, Swedish, Portuguese, Turkish, Croatian, Danish, Finnish, Norwegian, Arabic, Chinese.

TEMPERATURE RANGE

Operating temperature 5 – 40°C (41 – 104°F).

RELATIVE HUMIDITY

10% - 85% Non-condensing.

DIMENSIONS

DV-IP Server:
 • 89mm (H) x 440mm (W) x 445mm (D)
 • 3½" (H) x 17½" (W) x 17½" (D)

WEIGHT

DV-IP Server: 11.4 kg (25.1 lbs) with built-in PSU.

POWER SUPPLY

- DV-IP Server: 180W Internal Power Supply
- Input Voltage: 100-240 V AC 50/60Hz.

WARRANTY

3 years warranty including HDDs.

ACCESSORIES

CBUS ALARM MODULES

REMOTE ALARM MODULE

RELAY OUTPUT MODULE

RAID

JBOD

NETVU CONSOLE

Note 1 - BS8418 is the UK code of practice for remotely monitored detector activated CCTV systems.

Note 2 - Second audio channel will be enabled in a future software release.

Dedicated Micros UK

11 Oak Street, Swinton, Manchester M27 4FL UK Tel: +44 (0) 845 600 9500 Fax: +44 (0) 161 727 3300.

Dedicated Micros USA

14434 Albemarle Point Place, Suite 100, Chantilly, Virginia 20151 USA Freephone: 800 864 7539
 Tel: +1 703 904-7738 Fax: +1 703 904-7743 and 23456 Hawthorne Blvd. Suite 100, Torrance, CA 90505,
 Tel: +1 310 791-8666 Fax: +1 310 791-9877.

Dedicated Micros Germany

Neckarstraße 15, 41836 Hückelhoven, Germany Tel: +49 243 352 580 Fax: +49 24 33 52 58 10.

Dedicated Micros France

9-13 rue du Moulinet, 75013 Paris, France Tel: +33 1 45 81 99 99, Fax: +33 1 45 81 99 89.

Dedicated Micros Asia

16 New Industrial Road, #03-03 Hudson Techno Centre, Singapore 536204 Tel: +65 62858982 Fax: +65 62858646.

Dedicated Micros Australia

5/3 Packard Avenue, Castle Hill, NSW 2154, Australia Tel: +612 9634 4211 Fax: +612 9634 4811.

Dedicated Micros Malta

UB 2, San Gwann Ind. Est., San Gwann, Malta Tel: +356 21483 673 Fax: +356 21449 170.

Dedicated Micros Middle East

Building 12, Suite 302, P.O.Box 500291, Dubai Internet City, Dubai, United Arab Emirates
 Tel: +971 (4) 390 1015, Fax: +971 (4) 390 8655.

Dedicated Micros Slovenia

Delavska cesta 24, 4208 Sencur, Slovenia Tel: +386 4 279 18 90 Fax: +386 4 279 18 91.

Dedicated Micros Benelux

Joseph Chantraineplantsoen 1, 3070 Kortenberg, Belgium Tel: +32 2751 3480 Fax: +32 2751 3481.

The manufacturer reserves the right to change the specification without notice.

All trademarks are courtesy of registered owners.
 DV-IP is trademark of AD Holdings plc.
 The DM logo is a trademark of Dedicated Microcomputers group Ltd.
 NetVu Connected is a trademark of the AD group.
 MKT-SERV-D-004E



www.dedicatedmicros.com

